

## Rob Berry

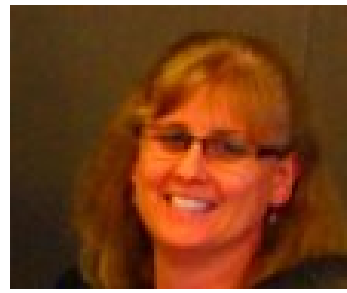


- An extensive and long history of involvement to Geography at both a national and state level
- AGTA President 1991-93
- AGTA Treasurer 2009-2013 – introduced electronic banking and conference financials in 2011 and 2013.
- Important member of the GeogSpace team
- AGTA website manager (and the web manager for GTANSW and GTAV)
- On GTAV Committee since 1978, serving as President for four years and Treasurer for three years
- A lifetime dedicate to geographical education
- Convenor of the AGTA Conference in Melbourne in 1990
- Member of the Editorial Advisory Panel for the AGTA journal *Geographic Education* for many years
- Involved in numerous curriculum projects and the production of teaching resources over the years
- An early leader in the use of technology in the geography classroom
- A consummate team member, supportive colleague and a fine mentor, Rob has made an unrivalled contribution which has earned him the deep respect of close colleagues and of Geography teachers within Victoria and Australia wide.

# Nick Hutchinson



- President of GTNSW up to and including 2013
- AGTA Board Director 2000-2013
- AGTA Chair 2006-2008
- Teacher of geography for over 40 years in schools and tertiary institutions in New South Wales
- Contributor to resources and publications to support geography teaching
- Important member of the GeogSpace writing team (2012-2013)
- National conference convenor
- Editor of AGTA's Geographical Education journal 2012-present
- In his time as AGTA he played a leading role in the securing Geography's place in the Australian Curriculum and between 2009-2013 was influential in shaping the nature of the curriculum developed.
- Recipient of the prestigious McDonald Holmes Medal in recognition of his outstanding contribution to the discipline of Geography.
- Nick's commitment to Geography has left an indelible mark on school Geography in Australia.
- Nick is nationally recognised as having a deep interest in, and knowledge of the discipline of Geography. He is widely acknowledged as an expert in his field.



# Jeana Kriewaldt

- A long standing and significant contribution to geography in Australia.
- Coordinating editor and contributor to *AGTA's Keys to Geography* and a contributor to *AGTA's Keys to Fieldwork* publications
- Associated with the GTAV since 1993, holding various roles including that of Vice President (1995-1998) and President (1999-2001).
- AGTA Board member 1995-2001
- Joint convenor of AGTA 2002 Conference in Melbourne
- Presently holds the position of Public Officer for AGTA
- Well respected as a geographical educator at the University of Melbourne where she has inspired many students through her passion for the subject
- Coordinator, facilitator and writer of the 2006 *ArLinkage Professional Standards for Accomplished Teaching School Geography resource (Melbourne University, AGTA and GTAV initiative)*
- Member of the Australian Curriculum and Assessment Authority (ACARA) Curriculum Advisory Panel for Geography from 2009-2013
- Contributed numerous papers to *AGTA's Geographical Education* and a member of the Editorial Review Panel for the journal.
- Contributed to a many geography textbooks for the classroom and pedagogy books for geography methodology classes at Universities.

# Wayne Sutton



- Wayne Sutton was a long-standing Director of the AGTA Board and made an outstanding and lasting contribution to the teaching of geography in Tasmania.
- Wayne was passionate about Geography and actively involved with providing leadership and support to geography teachers.
- He taught senior geography at Hobart College for 18 years where he was Head of Department.
- He was the chief marking examiner and had been the setting examiner and state moderator for Geography.
- In addition, Wayne was a contributing author for several publications and held positions on advisory editorial committees for a number of publications.
- A kind, considerate and deeply caring person Wayne will be sadly missed by the geography community throughout Australia.
- In recognition of Wayne's outstanding service to geographical education, AGTA has awarded Wayne the Don Biddle Award (posthumously).
- Louise Sutton (Wayne's widow) and son Stuart were presented with the award during AGTA's Board Meeting in Hobart on 2 May 2015.

# EmmyTerry



- Has made a significant contribution to geography in Western Australia and Australia
- AGTA Chair 2004-2006 and Vice Chair 2002-2004
- Coordinating editor of *AGTA's Geographia (2006-2013)*
- AGTA Board member 1999-2008
- AGTA representative on a number of national committees: National Education Forum, Australian Geography Competition and Secretary of the Australian Federation of Societies for the Study of Society and the Environment (AFSSSE) and Teaching Australia Forums to develop standards for professional associations.
- Co-convenor of AGTA/RGSQ Geography Week in WA (coordinating the development of the activities/booklet for two years).
- Worked on National committees and coordinated components of AGTA joint initiatives e.g. Natural Disasters resource, the Arab Gateways Project and the AusAID Pacific Project and the Olympic Projects.
- Voluntary writer to a chapter of the AGTA "Keys to Geography." publications
- Participated in the analysis and assessment of projects submitted as part of the Australian Geography Competition and Geoquest.
- Her professionalism and promotion of Geography within the national landscape brought valuable attention to the work of AGTA.